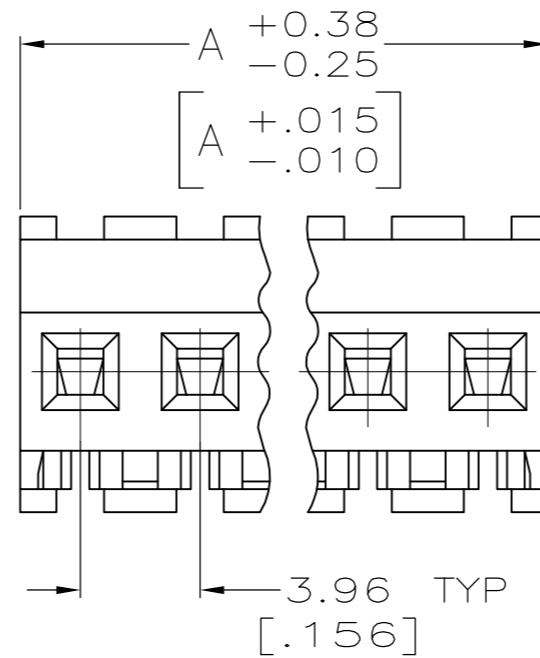
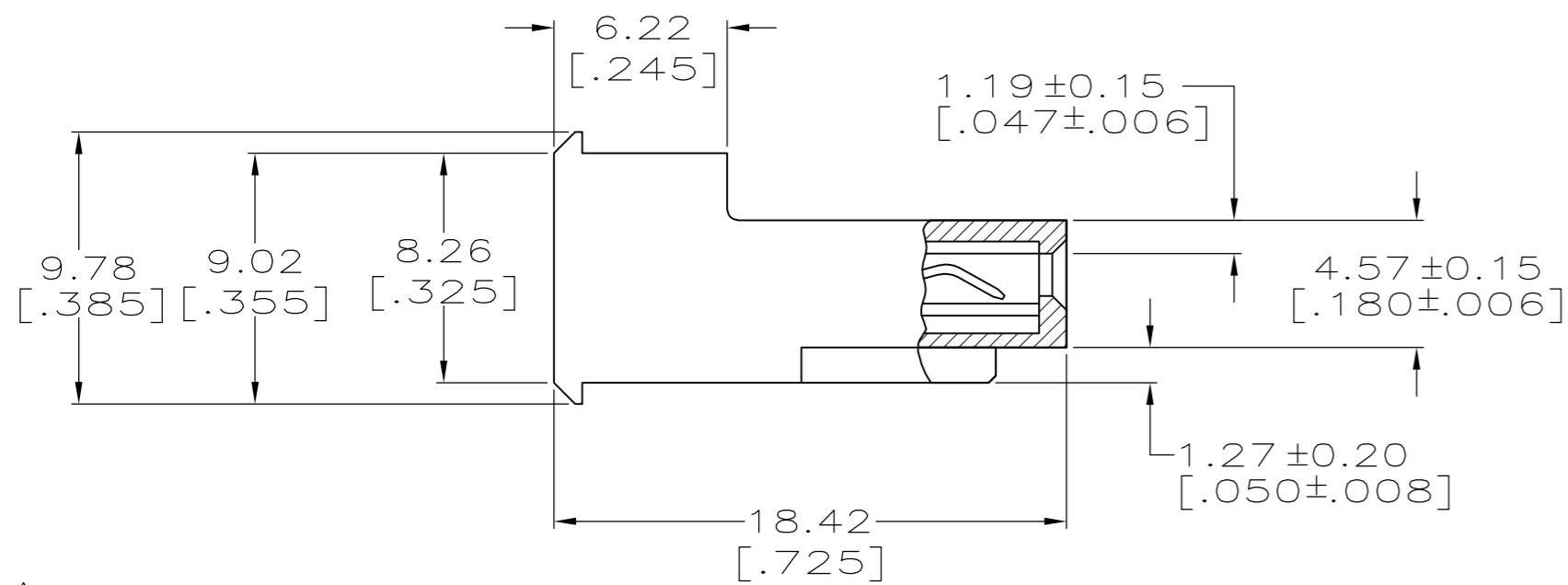
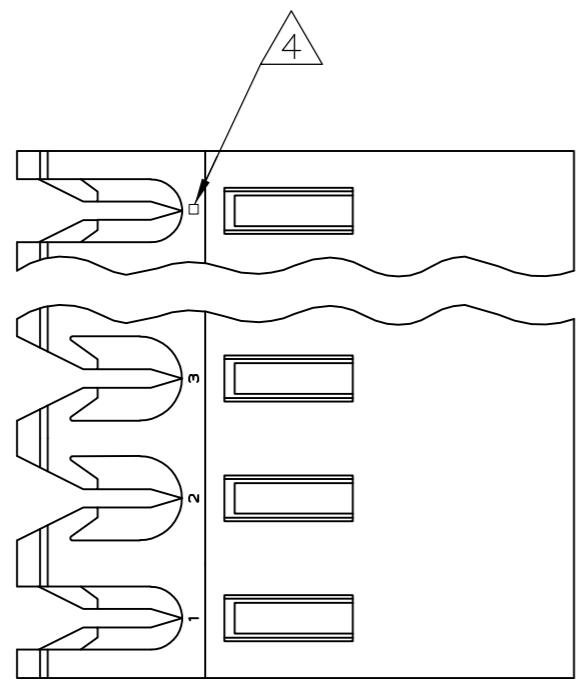


THIS DRAWING IS UNPUBLISHED. RELEASED FOR PUBLICATION
 © COPYRIGHT BY TYCO ELECTRONICS CORPORATION. ALL RIGHTS RESERVED.

| LOC | DIST | REVISIONS | | | | | |
|-----|------|-----------|-----|---------------|---------|-----|------|
| CM | 0 | P | LTR | DESCRIPTION | DATE | DWN | APVD |
| | | L | | ECO-07-012881 | 21JUN07 | KW | DB |



1 MATERIAL:
 CONNECTOR - NYLON UL94V-2 (RED).
 CONTACTS - 0.30[.012] THICK COPPER ALLOY.
 PLATING - 0.00038[.000015] GOLD IN CONTACT AREA.
 0.00203[.000080] MIN THICKNESS BRIGHT
 TIN-LEAD IN SLOT AREA FOR 641175-2
 THRU 2-641175-4 OR MATTE WHISKER
 MITIGATED TIN IN SLOT AREA FOR
 3-641175-2 THRU 5-641175-4 OVER
 NICKEL UNDERPLATE.

- 2. CONTACTS ACCEPT 22 AWG WIRE WITH 2.41[.095] MAX INSULATION DIAMETER.
- 3. CONTACTS MUST ACCEPT 1.14±0.03[.045±.001] SQUARE POST AND REMAIN LOCKED IN POSITION.

4 IDENTIFICATION NUMBER FOR LAST CIRCUIT MAY NOT APPEAR ON ALL ASSEMBLIES.

5. DIMENSIONS IN BRACKETS ARE IN INCHES.

6. HOUSING FEATURES ARE: FEED-THRU WITHOUT LOCKING RAMP.

7 NOTE DELETED.

8 NOTE DELETED.

| CONTACT FINISH | DIM A | NO. OF CIRCUITS | PART NO. |
|----------------|---------------|-----------------|------------|
| TIN | 95.10 [3.744] | 24 | 5-641175-4 |
| TIN | 91.14 [3.588] | 23 | 5-641175-3 |
| TIN | 87.17 [3.432] | 22 | 5-641175-2 |
| TIN | 83.21 [3.276] | 21 | 5-641175-1 |
| TIN | 79.25 [3.120] | 20 | 5-641175-0 |
| TIN | 75.29 [2.964] | 19 | 4-641175-9 |
| TIN | 71.32 [2.808] | 18 | 4-641175-8 |
| TIN | 67.36 [2.652] | 17 | 4-641175-7 |
| TIN | 63.40 [2.496] | 16 | 4-641175-6 |
| TIN | 59.44 [2.340] | 15 | 4-641175-5 |
| TIN | 55.47 [2.184] | 14 | 4-641175-4 |
| TIN | 51.51 [2.028] | 13 | 4-641175-3 |
| TIN | 47.55 [1.872] | 12 | 4-641175-2 |
| TIN | 43.59 [1.716] | 11 | 4-641175-1 |
| TIN | 39.62 [1.560] | 10 | 4-641175-0 |
| TIN | 35.66 [1.404] | 9 | 3-641175-9 |
| TIN | 31.70 [1.248] | 8 | 3-641175-8 |
| TIN | 27.74 [1.092] | 7 | 3-641175-7 |
| TIN | 23.77 [.936] | 6 | 3-641175-6 |
| TIN | 19.81 [.780] | 5 | 3-641175-5 |
| TIN | 15.85 [.624] | 4 | 3-641175-4 |
| TIN | 11.89 [.468] | 3 | 3-641175-3 |
| TIN | 7.92 [.312] | 2 | 3-641175-2 |
| TIN-LEAD | 95.10 [3.744] | 24 | 2-641175-4 |
| TIN-LEAD | 91.14 [3.588] | 23 | 2-641175-3 |
| TIN-LEAD | 87.17 [3.432] | 22 | 2-641175-2 |
| TIN-LEAD | 83.21 [3.276] | 21 | 2-641175-1 |
| TIN-LEAD | 79.25 [3.120] | 20 | 2-641175-0 |
| TIN-LEAD | 75.29 [2.964] | 19 | 1-641175-9 |
| TIN-LEAD | 71.32 [2.808] | 18 | 1-641175-8 |
| TIN-LEAD | 67.36 [2.652] | 17 | 1-641175-7 |
| TIN-LEAD | 63.40 [2.496] | 16 | 1-641175-6 |
| TIN-LEAD | 59.44 [2.340] | 15 | 1-641175-5 |
| TIN-LEAD | 55.47 [2.184] | 14 | 1-641175-4 |
| TIN-LEAD | 51.51 [2.028] | 13 | 1-641175-3 |
| TIN-LEAD | 47.55 [1.872] | 12 | 1-641175-2 |
| TIN-LEAD | 43.59 [1.716] | 11 | 1-641175-1 |
| TIN-LEAD | 39.62 [1.560] | 10 | 1-641175-0 |
| TIN-LEAD | 35.66 [1.404] | 9 | 641175-9 |
| TIN-LEAD | 31.70 [1.248] | 8 | 641175-8 |
| TIN-LEAD | 27.74 [1.092] | 7 | 641175-7 |
| TIN-LEAD | 23.77 [.936] | 6 | 641175-6 |
| TIN-LEAD | 19.81 [.780] | 5 | 641175-5 |
| TIN-LEAD | 15.85 [.624] | 4 | 641175-4 |
| TIN-LEAD | 11.89 [.468] | 3 | 641175-3 |
| TIN-LEAD | 7.92 [.312] | 2 | 641175-2 |

THIS DRAWING IS A CONTROLLED DOCUMENT.

DWN B. LEWIS 2-12-91
 CHK R. SWING 2-12-91
 APVD -
 PRODUCT SPEC 108-1051
 APPLICATION SPEC 114-1020
 MATERIAL - 1
 FINISH -

Tyco Electronics Corporation
 Harrisburg, Pa 17105-3608

MTA-156 CONNECTOR ASSEMBLY,
 22 AWG, STANDARD

SIZE A2 CAGE CODE 00779 DRAWING NO C-641175 RESTRICTED TO -
 SCALE 4:1 SHEET 1 OF 1 REV L

